

Winchester **WNAAC** *Neighborhood Action Coalition*

President: Kirk Vartan

Vice President: Ken Pyle

Secretary: OPEN

Treasurer: Barbara Morrey

Communications: OPEN

November 20th, 2019

Agenda



- 1. WNAC Business (Officers, public officials, minutes, treasurer report, mission)**
- 2. Updates from Councilmembers in San Jose and Santa Clara**
- 3. D1 Leadership Updates (5 min)**
- 4. Stevens Creek Innovation Zone Update**
- 5. Podcar City 2019 Conference Update (5 min)**
- 6. 280 Cap / Freeway Within a Freeway**
- 7. TransForm ReX Vision (Chris Lepe) - 30 minutes**
- 8. Moderated discussion of ReX Vision, featuring VTA Chair Teresa O'Neill & Audience Q & A (30 minutes)**
- 9. Next steps**

WNAC Vision



Ensure quality of life and economic development in the Winchester region through innovation.

Vice-Mayor Chappie Jones (D1 – San Jose) – Update
Councilmember Dev Davis (D6 – San Jose) – Update
Councilmember Debi Davis (D6 – Santa Clara) – Update
Councilmember Teresa O'Neill (D2 – Santa Clara) - Update



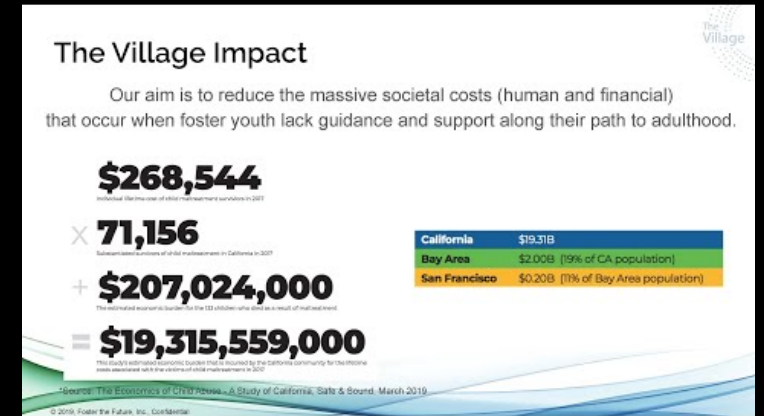
D1 Leadership Group Update



Simplifying Park Credits -
An Early View



Climate Smart Presentation



A Crowdsourced Approach
to Helping Foster Youth

<http://d1leadershipgroup.com/11-09-19-general-meeting/>

10/19 Pueblo Play Community Day

- Over 30 people attended
- Fun activities for kids (thanks Tracy!)
- Examples of different park activations
- Alternative park schedule presented
- Need to follow-up with PRNS

<https://puebloplay.wordpress.com/>



Innovation Zone update

- Santa Clara City Council voted to delay the decision on whether or not to join this program

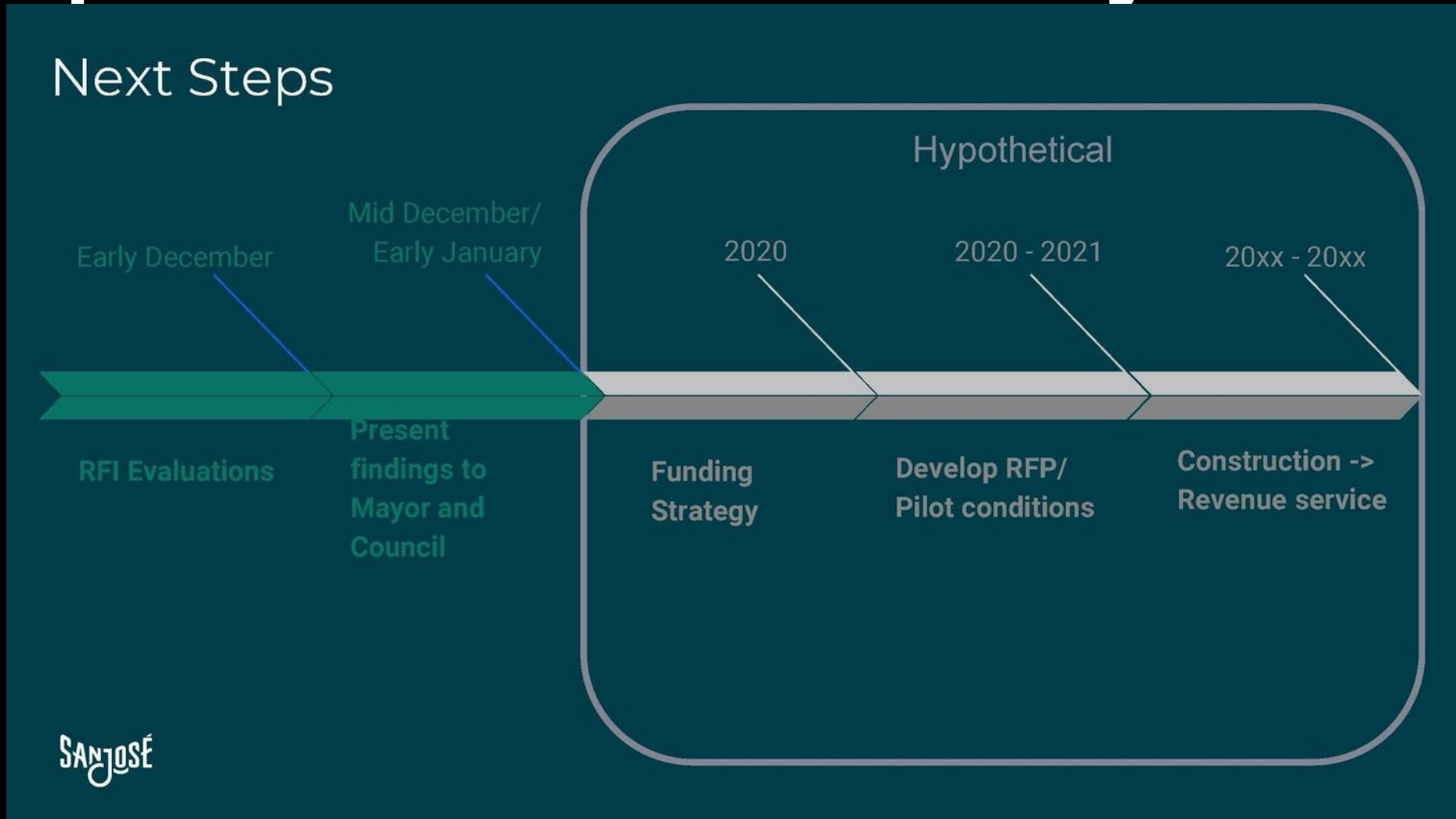
Concerns included:

- Lack of information from Councilmember Jones's office
- What does it mean?
- Can't write a blank check
- Staff resources are already constrained
- Residential area/wrong area
- What is in it for Santa Clara?
- Examples of what would be demonstrated

Stevens Creek Corridor Study

- Santa Clara City Council voted to approve a resolution to support this programs, but specifically did not commit any resources (financial or staff) to this.
- Clearly needs funding from VTA to even perform the analysis.

Stevens Creek Grade Separated Transit RFI Update - From Podcar City 2019



What we want to learn -Stevens Creek Line



Podcar City Update 2019 - AMD

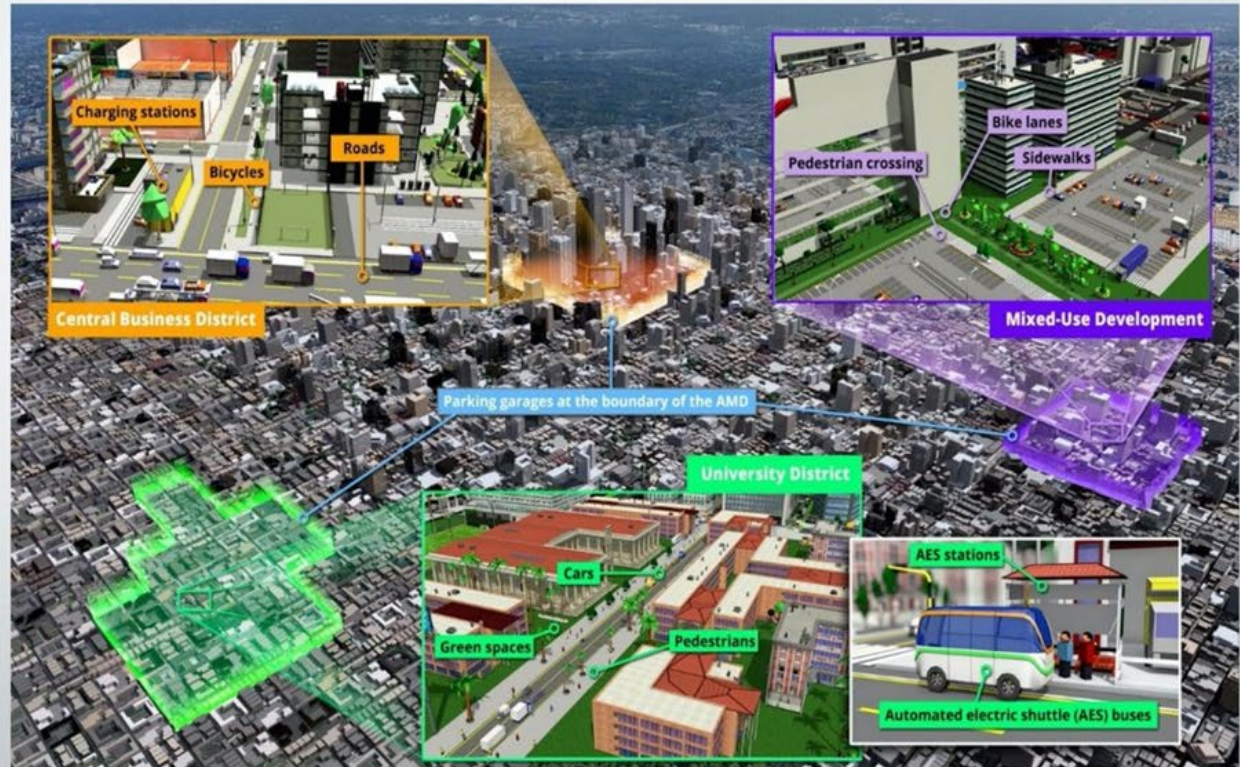
AMD Concept Definition

4

Automated Mobility District (AMD) Definition

As Conceived by the National Renewable Energy Lab (Dept. of Energy)

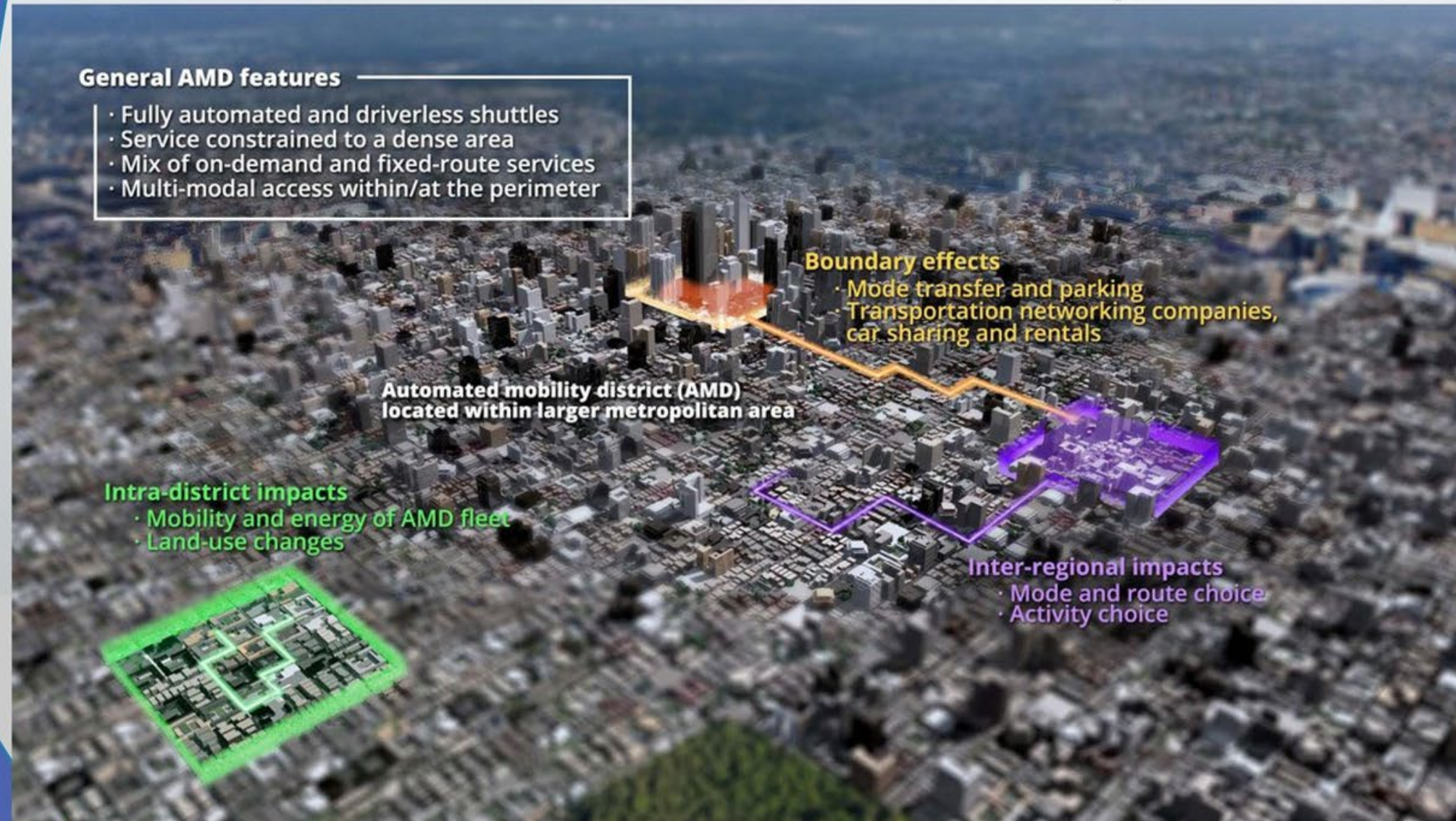
An Automated Mobility District is a geographically confined district or campus-sized implementation of connected and automated vehicle (AV) technology for the purpose of publicly accessible mobility by which all of the potential benefits of a fully automated mobility service can be realized.



What is an Automated Mobility District?

General AMD features

- Fully automated and driverless shuttles
- Service constrained to a dense area
- Mix of on-demand and fixed-route services
- Multi-modal access within/at the perimeter



AMD vs. ATN (Automated Transit Networks - tracks, guides, etc.)

- The difference between AMDs and ATNs is that multiple technologies and multiple fleet operators will occupy the same operational space.

Aurrigo



Source: Aurrigo, div. of RDM Group <https://aurrigo.com/>

2 to 4 Person Cars



Las Vegas News Bureau/Las Vegas Convention and Visitors Authority <https://lvcva.photoshelter.com/>

3 to 16 person

Tesla Rendering of

LVCC Underground Vehicle

Volvo – Autonomous Bus



Source: Volvo Group
<https://www.volvogroup.com/en-en/news/2019/mar/autonomous-electric-bus.html>

30 to 50 Person Cars



Capping the Freeway

Uniting the North and South Side of 280

Members

Gary Cunningham

Ken Pyle

Kirk Vartan

Marius F.

JC Carlin

Dick Silva

I-280 Cap / Freeway Within a Freeway review

Freeway Cap Vision – Cover & Connect



Promote the general idea of **capping freeways** in Santa Clara County.

Disseminate existing information, and obtain cooperation from different constituents (cities, developers, existing businesses, political jurisdictions, and neighborhoods).

Develop the concept in such a way that it facilitates the start of a project to cap I-280 and lead to a **county-wide effort** to **reimagine** the existing expressway and freeway rights-of-way.

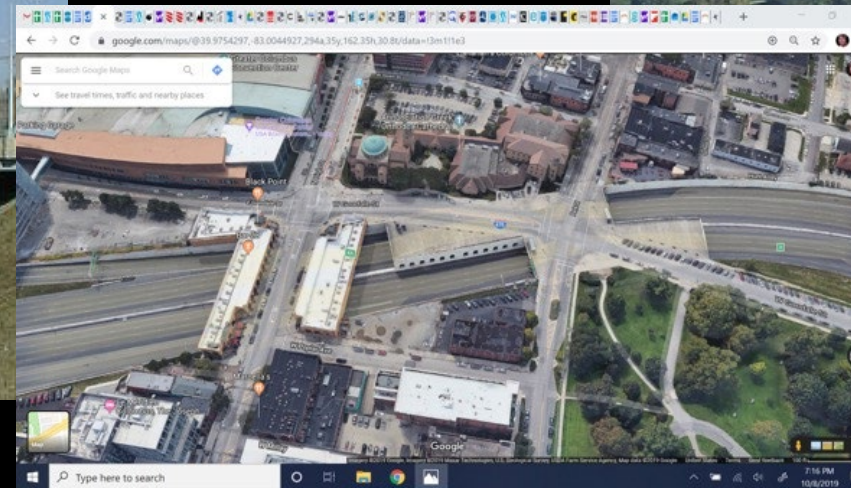
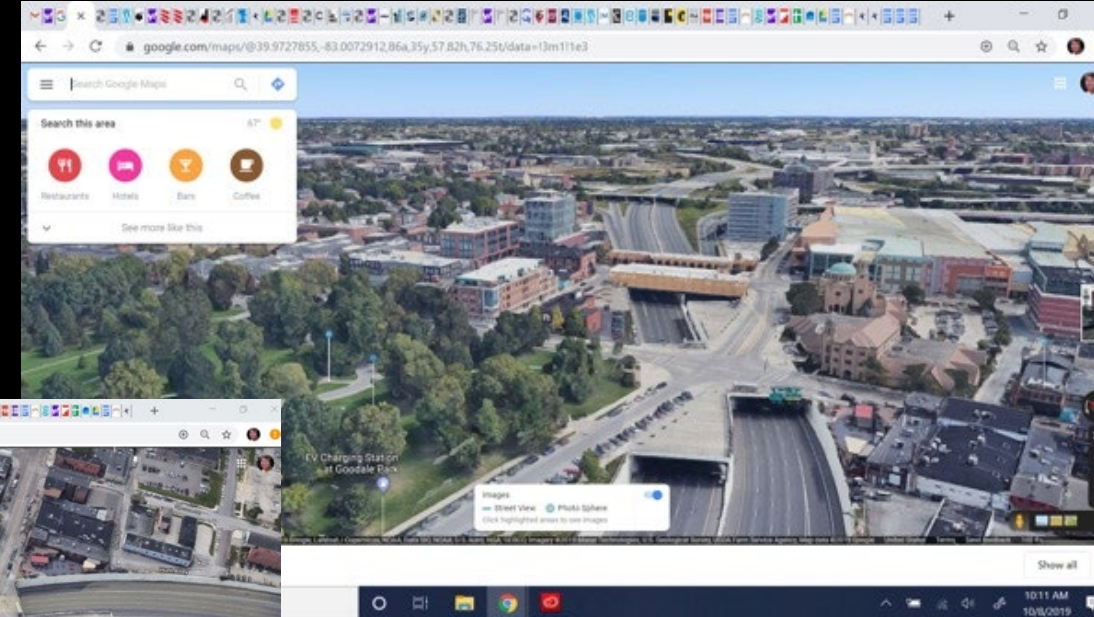
Columbus Cap - Mainstreet over a Freeway - Keys to Success

- An active roadway construction project;
- A well-organized citizenry;
- A willing developer;
- A city council willing to push for the project and make it a priority; and
- A mature-enough retail environment to support the development



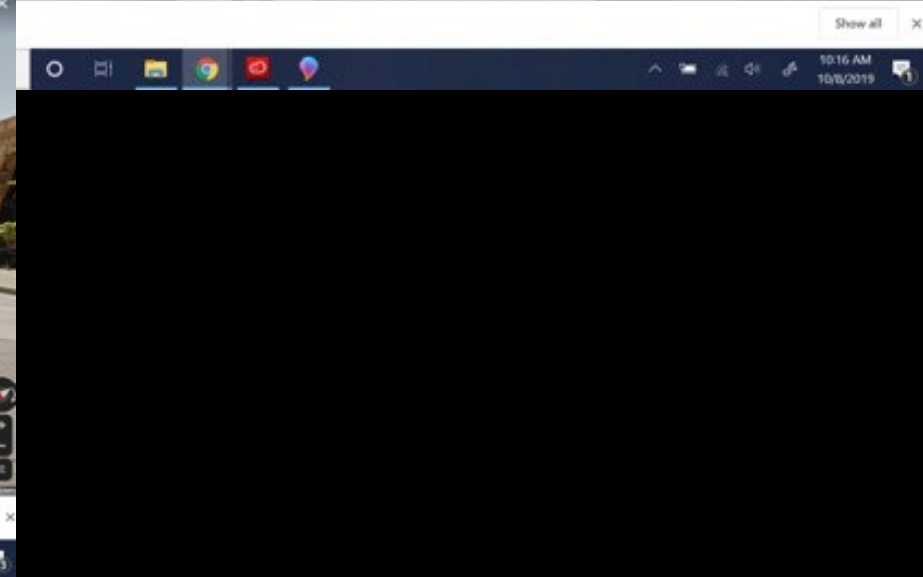
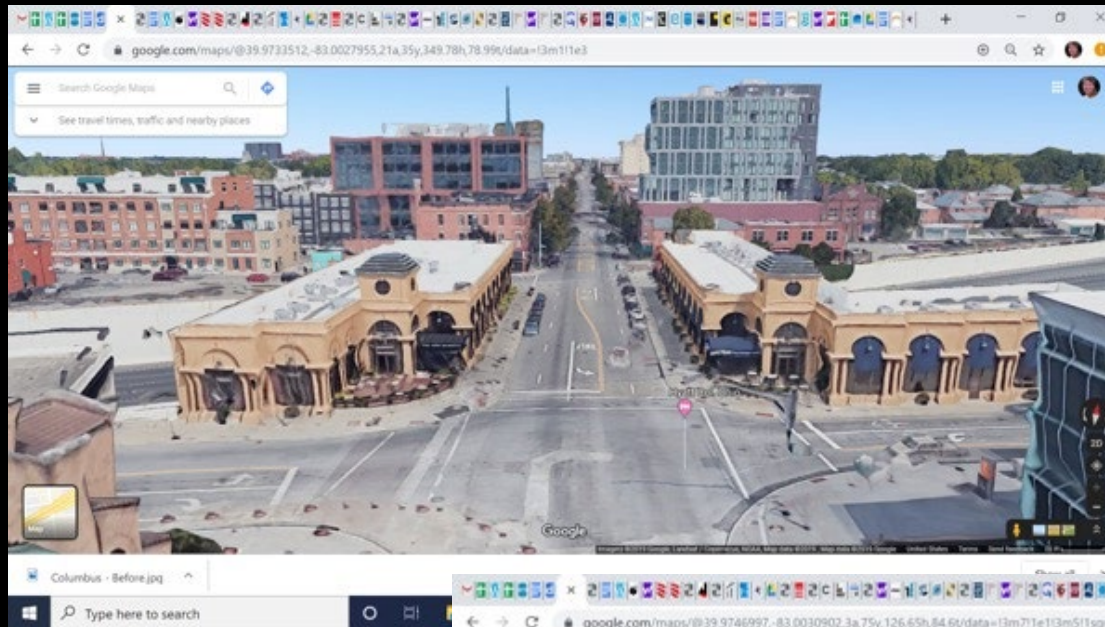
Columbus Cap - Some Numbers

- Development costs - \$7.8M
- Bridges & preparation costs - \$1.9M
- Started 2002 - Complete 2004



*The \$1.9 M consists of \$50k for clearing title (the Ohio DOT hadn't purchased the air rights when they built the freeway), \$190k in architectural fees, \$1.3 M for the bridges, the city paid \$325k for extending the utilities, Plus, the developer was given a 10-year tax abatement, in exchange for a 10% profit share with the city and, if the developer sells the development, the city would receive a 10% cut.

More Columbus Images



FWIF - Houston Example

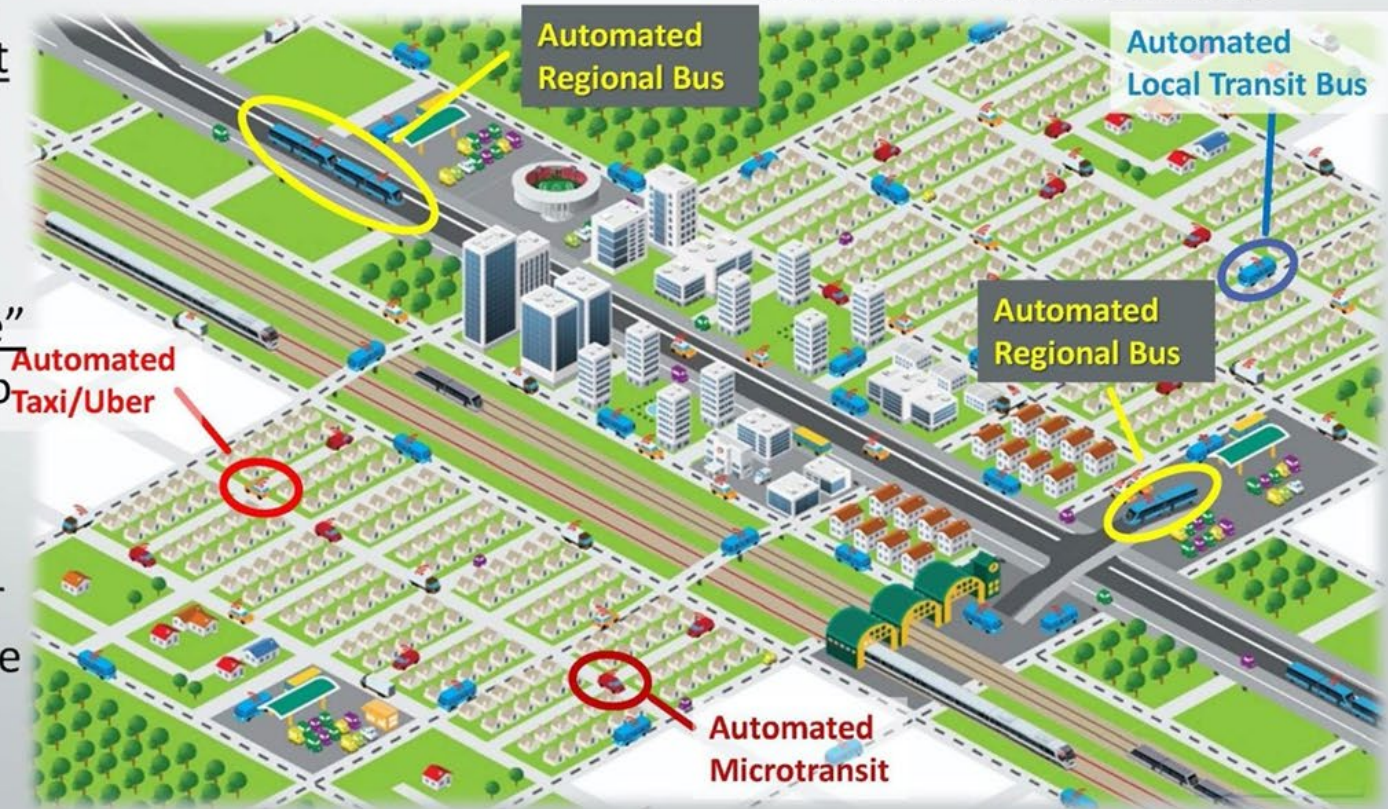
Case Study: Houston

19

Houston's Plan: AV Buses Operating in Protected HOV Lanes as the Backbone of a Regional High Capacity Transit System

- Recent study by the High Capacity Transit Task Force produced a multi-modal plan.
- METRO's HOV lane system with "off-line" stations is the key to regional mobility.
- Metro's University District AV Circulator System is a prototype AMD Deployment

Source: Houston-Galveston Area Council



FWIF - Houston Example

Case Study: Houston

20

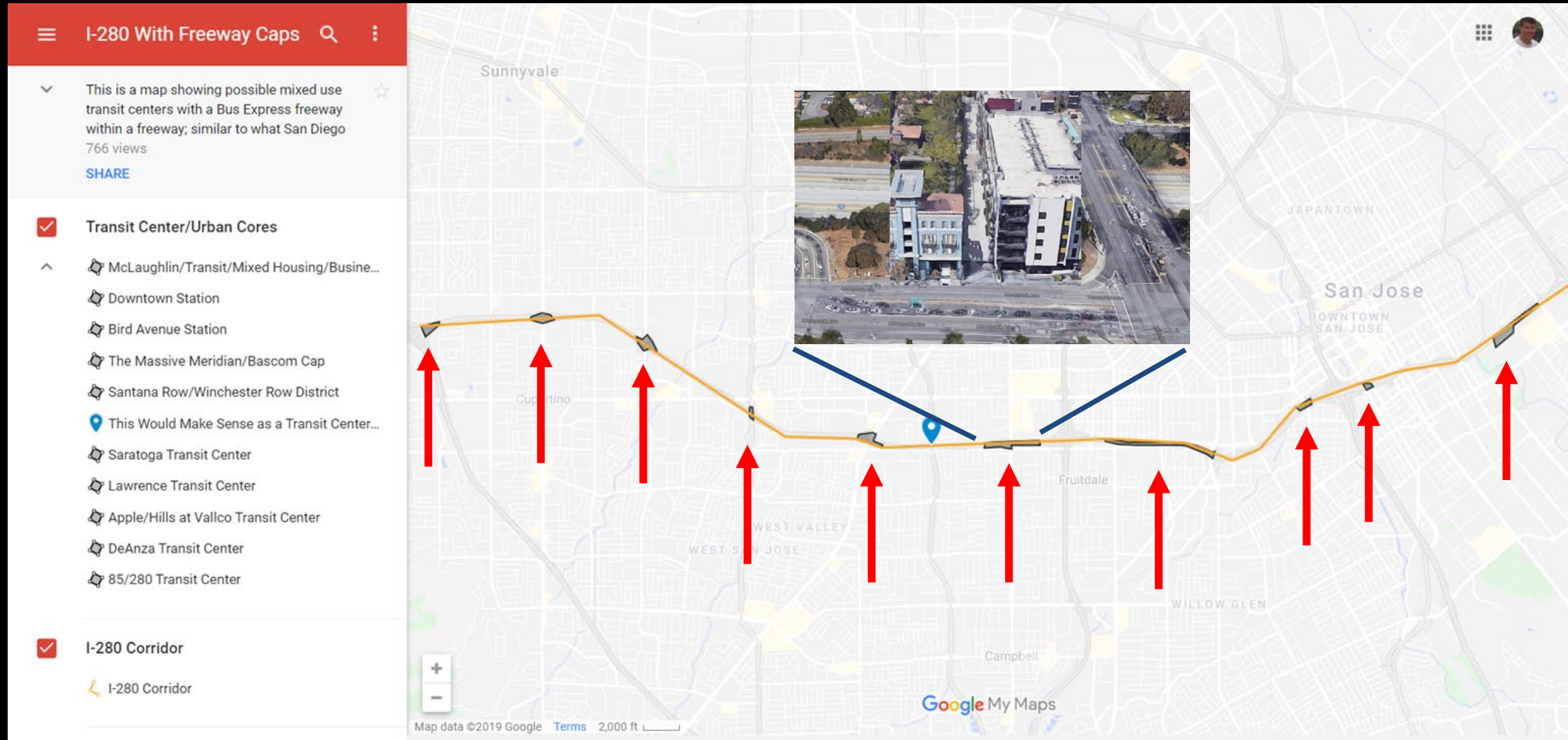
Houston's 2045 RTP Planning for the Connection of Urban Districts to the Regional HOV Lane System

Texas Southern University AV Shuttle is METRO's Prototype of an AMD Circulation System

100 Miles of Barrier Protected HOV Lanes are Excellent Transit Facilities to Deploy AV Buses

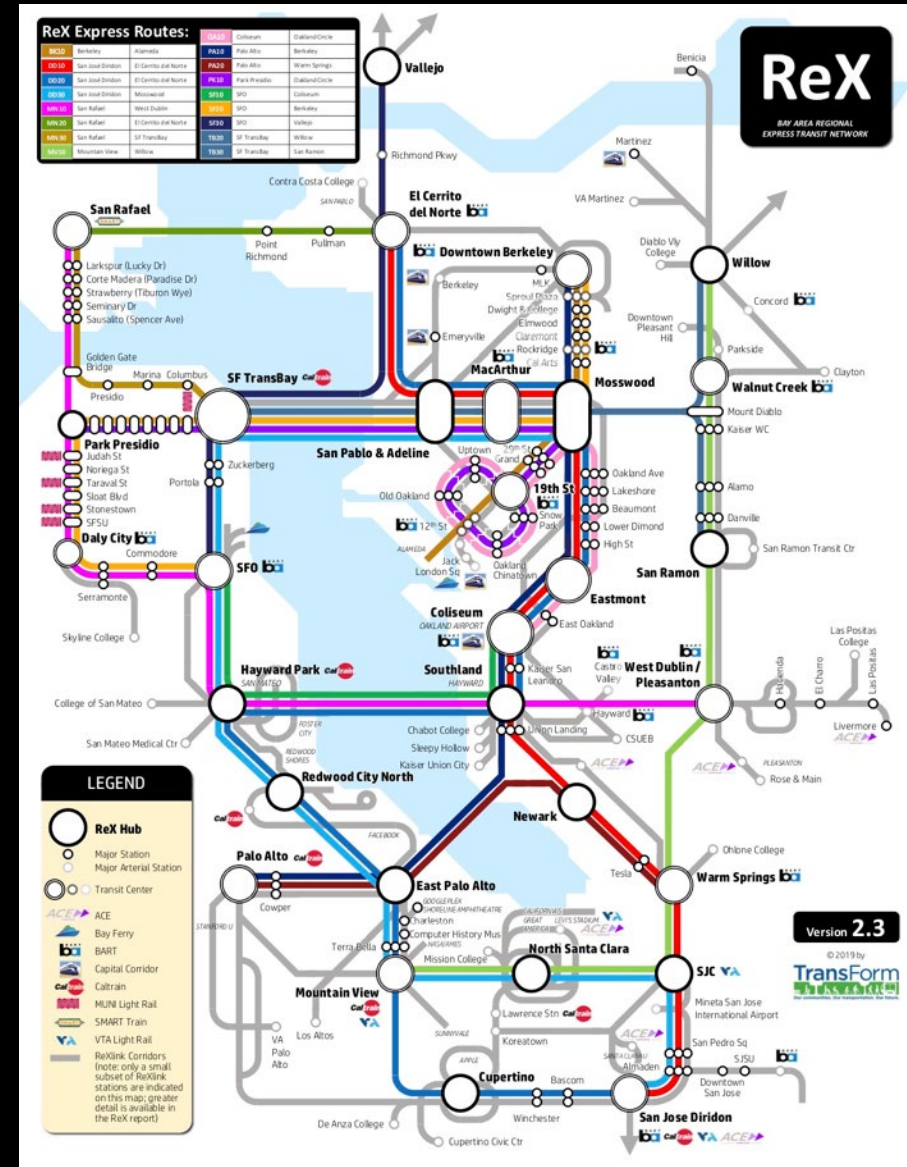


FWIF & Caps - An Integrated Hybrid Urban/Suburban Interface



Transform ReX Network Overview - Chris Lepe

Connecting the Bay Area with a Regional Express (ReX) Transit Network



Panel discussion on ReX and Regional Transit



Chris Lepe
TransForm



Teresa O'Neill
VTA Board Chair

Extra Slides....



Podcar Map of Metro vision from SJ DOT????

Next Steps

